

**Pacific Horticulture and Sterling Tours invite you to join**

**Artists and their Eden:  
Gardens in the South of France**  
June 2-10, 2017  
*Escorted by Linda McKendry*

**June 2, Friday: DEPART USA**

**Overnight en route**

Today we board our flight to Marseille and overnight on board as we cross the Atlantic.

**June 3, Saturday: MARSEILLE / MAZAN**

**Chateau de Mazan (WD)**

On arrival at the Marseille airport, we meet our guide and driver and transfer directly to Chateau de Mazan, our home for the next three nights. Located in a typical Provencal village we will enjoy this delightful hotel, full of charm and history.

<http://www.chateaudemazan.com/uk/index.php>



Free time to settle in and recover from the flight before joining Linda and the other guests for our Welcome dinner at the hotel.

**June 4, Sunday: TOURING FROM MAZAN**

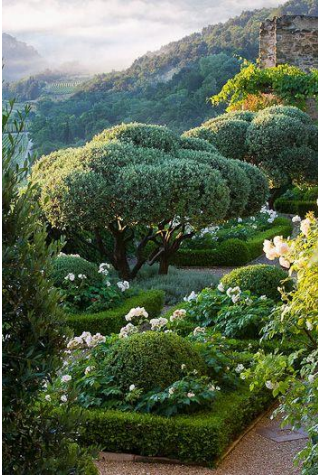
**Chateau de Mazan (B,L)**

This morning after breakfast, we travel to the beautiful village of Menerbes, a village of 18<sup>th</sup> century homes, ramparts, wine and truffles along the lavender trails that has long attracted famous writers, artists and fervent gardeners.

NOTE: All private garden visits are subject to the owner's availability and subject to confirmation. A suitable replacement will be provided in the event one of the featured gardens became unavailable.

Our visits today will include:

**Le Carméjane** – A hilltop jewel with amazing views over the area with a tiered garden displaying plant sculptures by Marc Nucera, a vegetable garden and fruit and olive orchards.



**La Carmejane**



**Le Clos Pascal**

**Le Clos Pascal** – a private garden designed by Nicole de Vésian in the 1990's with a small vineyard, long gentle terraces and cloud clipped evergreens.

**Maison Dora Maar** – a small, recently restored garden with views of the Luberon hills which originally belonged to Picasso's muse, Dora Maar and is now an artist's community.

A light lunch is included today. Return to Chateau de Mazan for evening at leisure.

**June 5, Monday: TOURING FROM MAZAN**

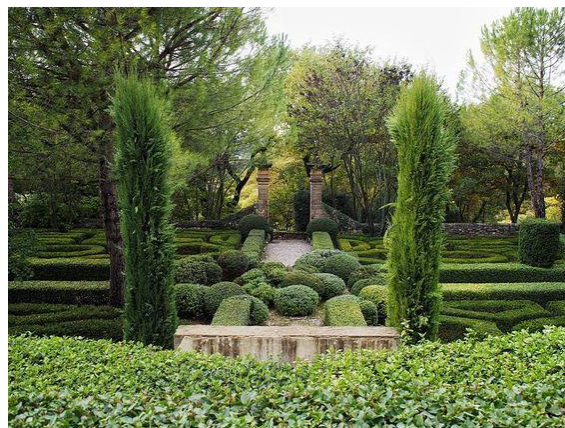
**Chateau de Mazan (B,L)**

Our day of touring takes us to more beautiful villages and scenery, into the higher part of the Luberon area.

In the village of Bonnieux, we will visit **La Louve** – a sublime Mediterranean garden with Japanese influences, considered to be one of the greatest works by Nicole de Vesian.



**La Louve**



**La Chabaude**

In Apt we will see **La Chabaude** – winner of the 2014 Contemporary Garden Award in a Historic Home, a subtle and harmonious space that will enchant you.

A lunch is included. Return to Chateau de Mazan for evening at leisure

**June 6, Tuesday: MAZAN/ST REMY de PROVENCE**

**Hotel de L'Image (B,L,D)**

This morning we bid farewell to Chateau de Mazan and travel to our new “home”, Hotel de L'Image in St Remy de Provence. <http://www.hotel-image.fr/uk/hotel-luxe-saint-remy-de-provence-site-officiel.php>

On the way, we will enjoy another day of glorious Provence touring with a visit of **St André's Abbey** – a 10<sup>th</sup> monastery with terraced gardens and amazing views over the area including the Rhone river and the city of Avignon.



**St André's Abbey Garden**



**Alchemist's Garden**

In Eygalieres we visit The **Alchemist's Garden**, a private contemporary garden that was created in 1997 by the landscapers Ossart & Maurières. Beginning with a labyrinth, it is a philosophical essay in the form of a garden, using plants popularly associated with magic and alchemy.

Lunch is included.

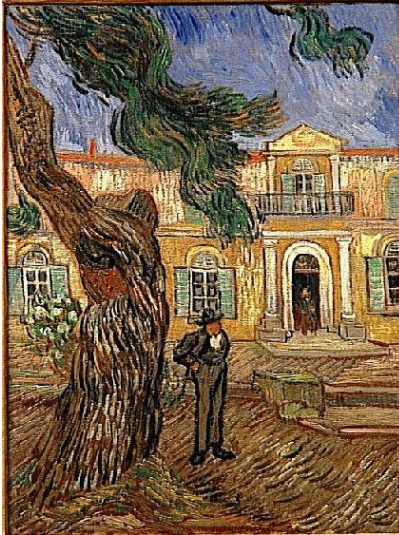
In the late afternoon we will settle into our hotel and later have dinner in the hotel's restaurant.

**June 7, Wednesday: ST REMY de PROVENCE**

**Hotel de L'Image (B, L)**

Set in the heart of the Alpilles mountain range, St Remy de Provence is the city where Vincent van Gogh painted over 100 works. Today is market day, one of the best in the region. We'll spend time here, filling our eyes, nose, mouth and belly from the colorful stalls of the local merchants. It is a good place to buy souvenirs from the local artisans. We will also shop for our lunch, which today will take the form of a picnic!

This afternoon, we will tour a private courtyard garden designed by **Michel Semini** and the garden of the **St Paul Asylum**, where Van Gogh lived, having committed himself as a psychiatric patient.



NOTE: Subject to his availability, we may be able to meet with Michel Semini himself. He is a famous landscape artist who has created gardens for many personalities in the area and still tends to Pierre Bergé's garden.

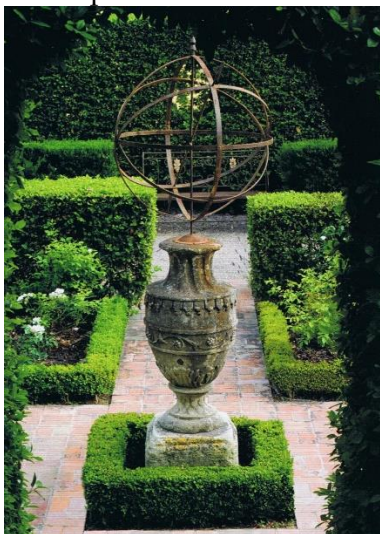
Evening at leisure in St Remy.

**June 8, Thursday: TOURING FROM ST REMY**

**Hotel de L'Image (B,L)**

After breakfast, we travel to the nearby countryside and visit two more gems.

**Le Mas de Barraquet** – an 18th century farmhouse that is nestled above the windswept plains of Camargue and the Alpilles hills with broad terraces, evergreen plants and boxwood hedging swirls punctuated with the wonderful scents of roses, honeysuckle, lavender and wisteria.



**Le Mas de Barraquet**



**La Petite Fontanille**

**La Petite Fontanille** – a private estate composed over the years by Rosemary Verey, the British designer Tim Rees and most recently by Ryan Gainey. Magnificent views from these terraced gardens with cascades, a fountain, fruit and vegetable gardens and an 18<sup>th</sup> century folly.

Lunch is included. Return to St Remy for an evening at leisure.

**June 9, Friday: TOURING FROM ST REMY**

**Hotel de L'Image (B,L,FD)**

Our last day of touring takes us to Aix en Provence, an ideal city to explore on foot and full of Provençal charm. Our visits will include:

**La Bastide de Romégas** – This private estate illustrates the typical 17<sup>th</sup> century architecture of a home in Aix with a French garden from the 18<sup>th</sup> century embellished with ponds, a fountain, a maze and views of the Sainte Victoire Mountain.

**Albertas Garden** - Still in the hands of the same family that created this park in 1640, the garden combines both Italian inspiration and classical French style in what is considered one of the most beautiful parks in Provence.



**Albertas Garden**

Lunch is included.

There will be some free time for shopping before returning to St Remy for our final evening and our farewell dinner at the hotel.

**June 10, Saturday: DEPART**

**Home (B)**

After breakfast, we transfer to the Marseille airport for our departure flight. Au revoir Provence!

#### NOTES:

1. One transfer for the whole group – additional transfers at extra cost.
2. For those who wish to plan a pre-trip stay or extend your trip on an individual basis, we will be happy to custom design a program to suit your exact needs.

#### LAND COST PER GUEST:

Based on a minimum of 16 paying guests \$ \$3975 per person based on double occupancy  
Single supplement is \$1135.

#### INCLUDED ARE:

- Services of an English speaking guide specialized in horticulture from arrival at the Marseille airport on June 3 till departure from the Marseille
- Services of a 25-30-seater A/C coach and driver per itinerary
- 3 nights at 4\* **Chateau de Mazan** tax and breakfast included.
- 4 nights at 4\* **Hotel de L'Image** tax and breakfast included.
- 7 breakfasts (B), 7 lunches (L), 3 dinners (D)  
(Dinners are 3-course meals with a ¼ bottle of wine per person and water).
- Admission fees for all visits as stated in itinerary

#### NOT INCLUDED ARE:

- International Airfare
- Meals and drinks not specifically mentioned
- Entrance fees not specifically mentioned
- Room Service
- Excess Baggage Charges & Portage
- Passport and Visa Fees if applicable.
- Items of a personal nature such as laundry, telephone calls, etc...
- Any Item not specifically mentioned in the itinerary.
- Gratuities for guides and drivers. These are at your discretion. We will provide you with a tipping guide.
- Trip insurance – strongly suggested.

#### DEPOSIT & FINAL PAYMENT:

- Terms and conditions to follow.
- Garden visits are subject to change due to owner's availability at time of confirmation.
- Currency fluctuation warning: **Price is subject to change in the event of major currency fluctuation.** Final price will be based on rate of exchange at time of final payment. Exchange rate will be guaranteed at time of full payment

## STERLING TOURS, LTD

2907 Shelter Island Drive Suite #105-262 San Diego, CA 92106

Tel: 619 299-3010 800-976-9497 CST2023849-40

[www.sterlingtoursltd.com](http://www.sterlingtoursltd.com) info@sterlingtoursltd.com